

# Juvenile Detention Center Statistics

## Quarter 2, 2010 Report

(period includes April 1 – June 30, 2010)

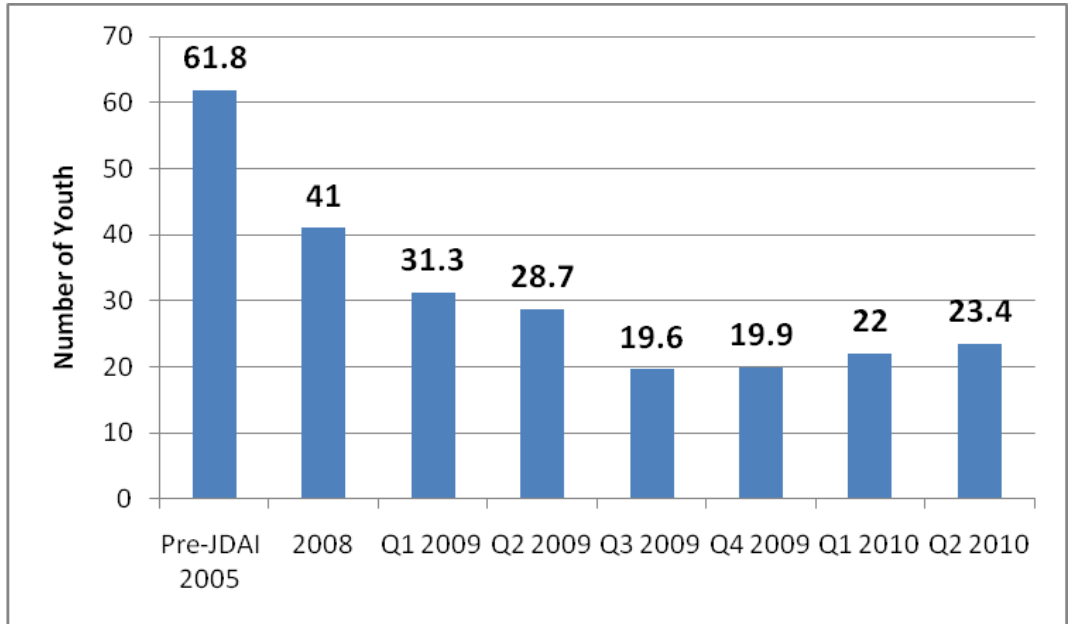
Date: 7/2/10

### Detention Program Statistics

#### Average Daily Population of Detention

Q2 2009 – Q2 2010: Decrease of 18%

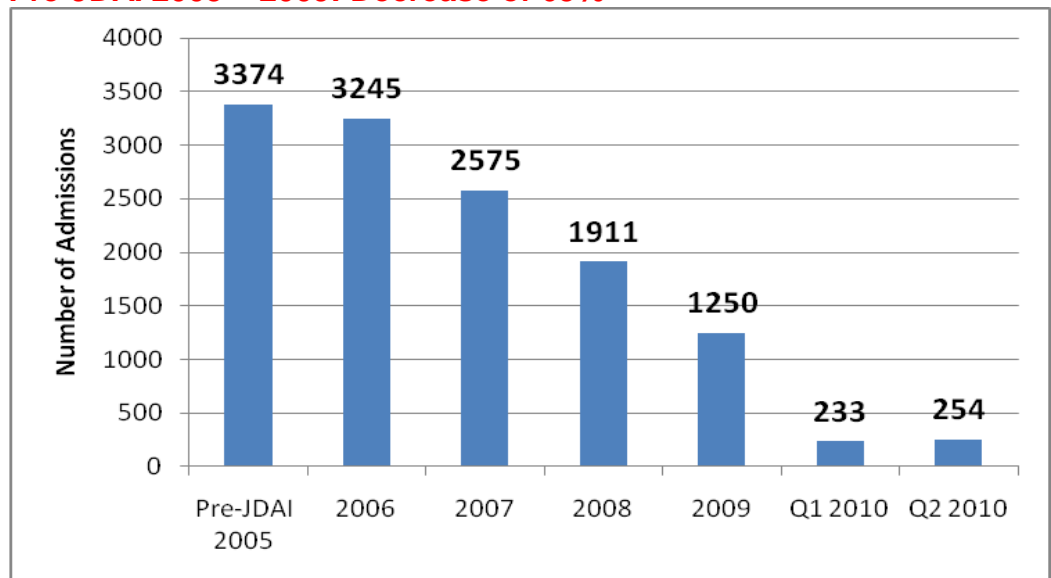
Average Daily Population of Juveniles in Detention (for Detention Status Juveniles only).



#### Annual Admissions to Detention

Pre-JDAI 2005 – 2009: Decrease of 63%

Annual Admissions to Detention (for Detention Status Juveniles only).



### Reasons for Detention Admissions, Q2 2010

Reasons for Detention Admissions (for Detention Status Juveniles only).

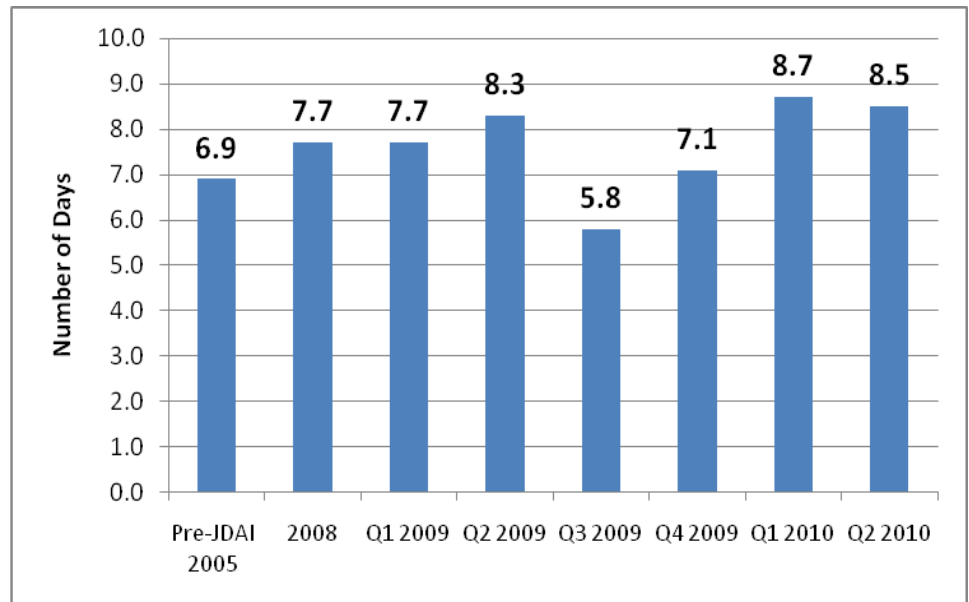
Reasons for Detention Admissions	Q2 2010	
Felony-New Offense Charged	94	37.0%
Gross Misd. - New Offense Charged	15	5.9%
Misd. - New Offense Charged	36	14.2%
Petty or Missing - New Offense Charged	15	5.9%
Court Order	18	7.1%
Probation Violation	20	7.9%
Waiver	9	3.5%
Warrant	47	18.5%
	<b>254</b>	<b>100.0%</b>

### Average Length of Stay in Detention

Q2 2009 – Q2 2010: Increase of 2%

Average Length of Stay in Detention (for Detention Status Juveniles only).

The day the juvenile is admitted plus the day the juvenile is released is counted as one day in computing total detention days.



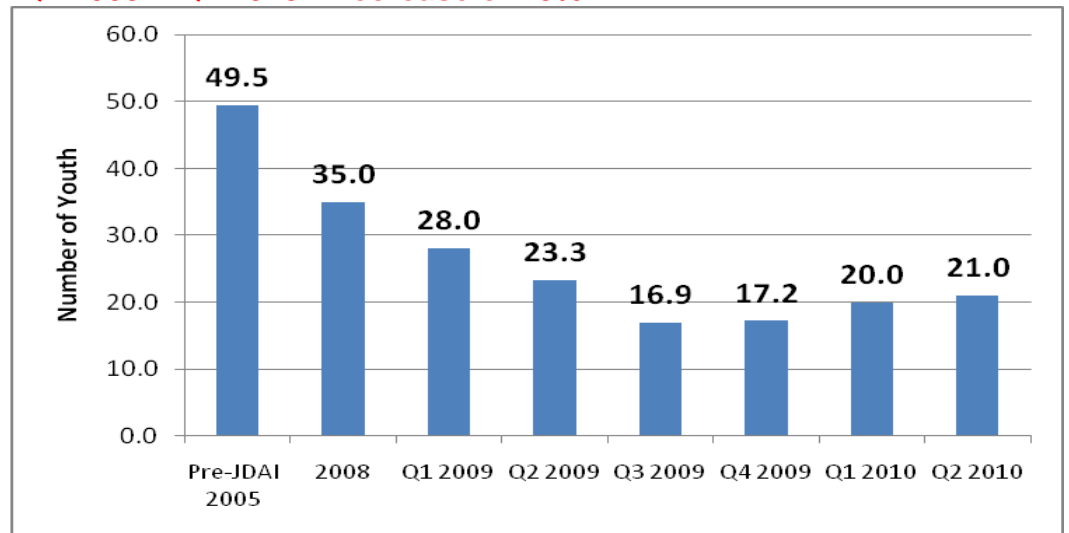
**Avg. Length of Stay in Detention by Race & Latino Ethnicity, Q2 2010**

Average Length of Stay in Detention by Race and Latino Ethnicity with any Race (for Detention Status Juveniles only).

Race	No. of Days
Black	9.2
White	5.8
Latino Ethnicity w/any race	7.3
Asian	9.1
Native American	9.3
Other	8.1
<b>Average Length of Stay</b>	<b>8.5</b>

**Average Daily Population of Youth of Color in Detention  
Q2 2009 – Q2 2010: Decrease of 10%**

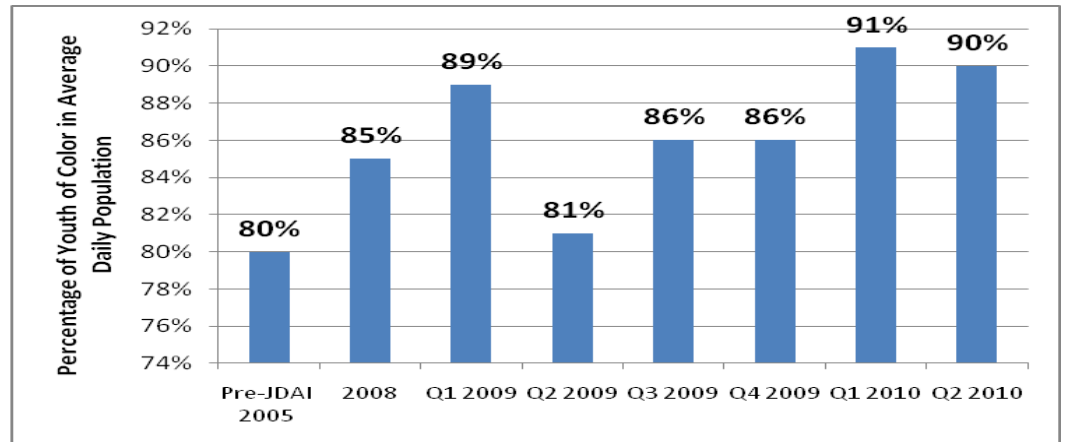
Average Daily Population of Youth of Color in Detention (for Detention Status Juveniles only).



**Youth of Color as a Percentage of ADP in Detention  
Q2 2009 – Q2 2010: Increase of 11%**

Youth of Color Percentage of Overall ADP in Detention (for Detention Status Juveniles only).

Formula:  
Youth of Color ADP /  
Total Detention ADP



**Average Daily Population of Youth in Detention by Race and Latino Ethnicity, Q1 & Q2 2010**

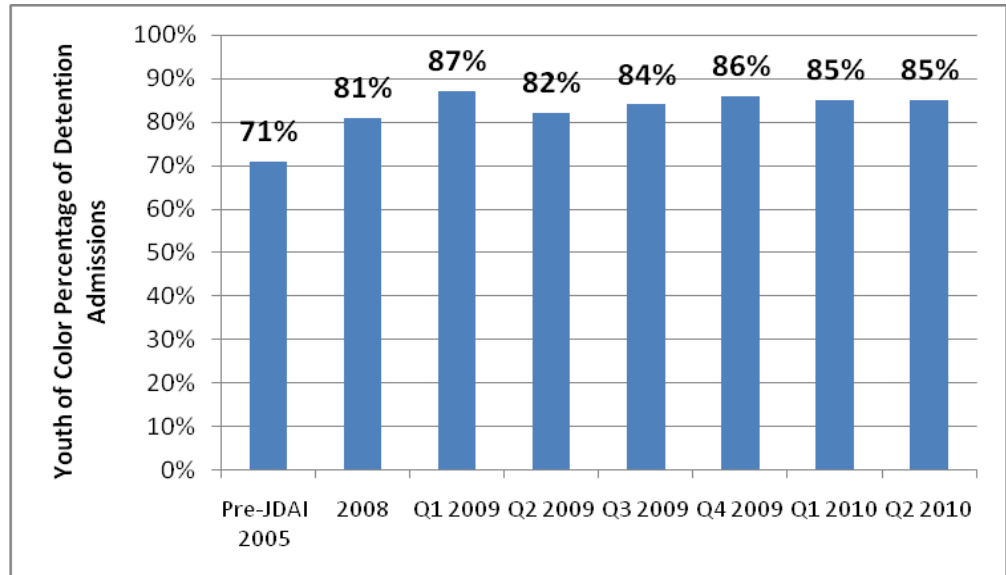
Average Daily Population of Youth in Detention by Race and Latino Ethnicity with any Race (for Detention Status Juveniles only).

Race	Q1 2010		Q2 2010	
	No. of Youth	% of Total	No. of Youth	% of Total
Black	15.4	69.4%	15.5	66.2%
White	2.1	9.5%	2.4	10.3%
Latino (w/any race)	1.3	5.9%	1.6	6.8%
Asian	1.0	4.5%	1.7	7.3%
Native American	0.6	2.7%	1.2	5.1%
Other	1.8	8.1%	1.0	4.3%
<b>Avg. Daily Pop.</b>	<b>22.2</b>	<b>100.0%</b>	<b>23.4</b>	<b>100.0%</b>

**Youth of Color Percentage of Detention Admissions**  
**Q2 2009 – Q2 2010: Increase of 4%**

Youth of Color Percentage of Detention Admissions (for Detention Status only).

Formula:  
 Youth of Color Admissions/  
 Total Admissions



**Admissions to Detention by Race and Latino Ethnicity, Q2 2010**

Admissions to Detention by Race and Latino Ethnicity with any Race (for Detention Status Juveniles only).

Race	Number of Admissions	% of Total
Black	153	60.2%
White	38	15.0%
Latino w/any race	21	8.3%
Asian	18	7.1%
Native American	12	4.7%
Other	12	4.7%
<b>Number of Admissions</b>	<b>254</b>	<b>100.0%</b>

## JDC Facility Statistics

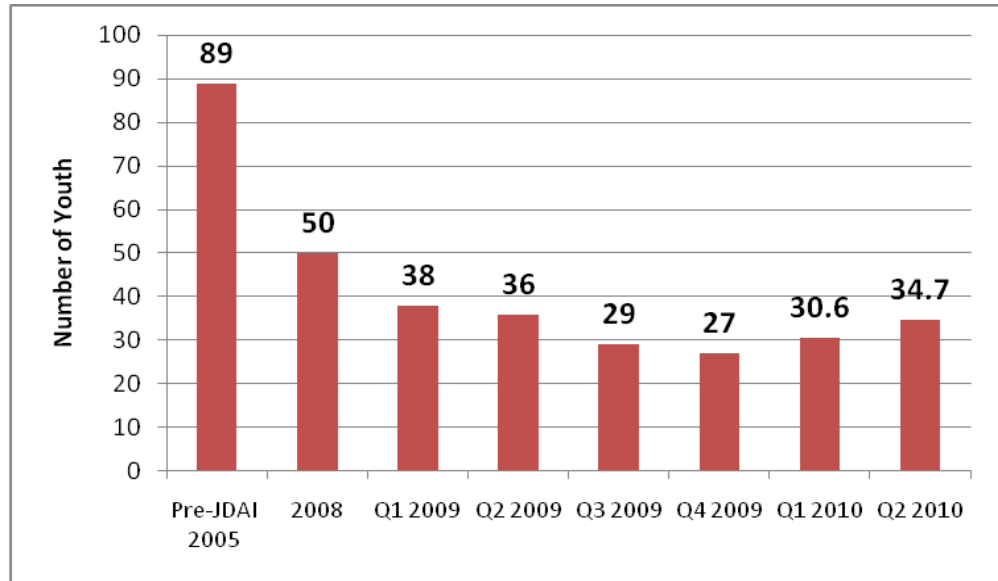
### Average Daily Population in JDC Facility

Q2 2009 – Q2 2010: Decrease of 4%

Average Daily Population for entire JDC facility: Includes QUEST (formerly START), Work Program for Boys and Girls,\* and Detention.

Capacity of facility = 86

\*The Boys Work Program was moved to Boys Totem Town in early March 2008 and was renamed the Recovery Program. Girls remain at JDC.

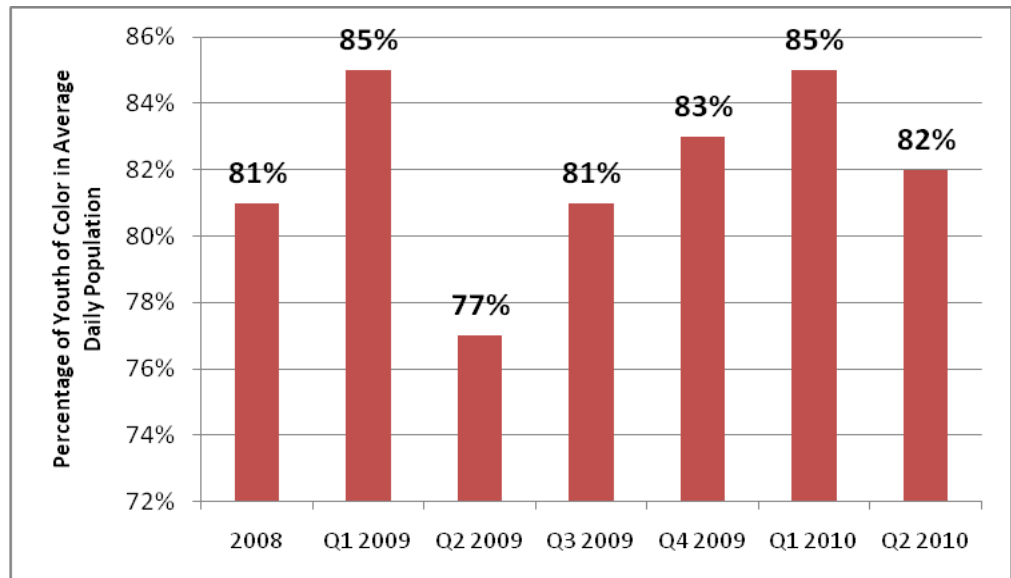


### Youth of Color as a Percentage of Average Daily Population in JDC Facility

Q2 2009 – Q2 2010: Increase of 6%

Youth of Color Percentage of Overall ADP in JDC Facility.

Formula:  
 $\text{Youth of Color ADP} / \text{Total Facility ADP}$

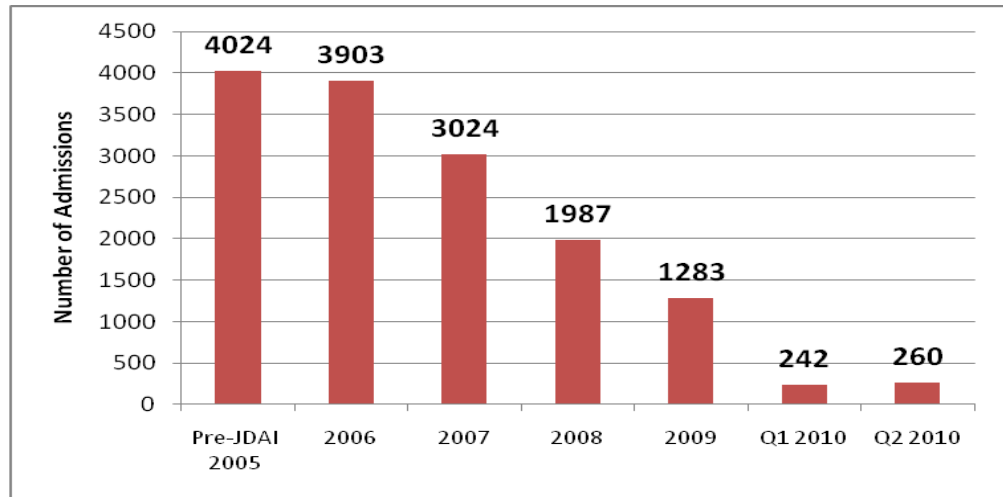


### Annual Admissions to JDC Facility

2008 – 2009: Decrease of 35%

Admissions to entire JDC facility: Includes QUEST (formerly START), Work Program for Boys and Girls, and Detention.

An admission into Detention immediately followed by an admission into the Work Program or QUEST Program is counted as two admissions.



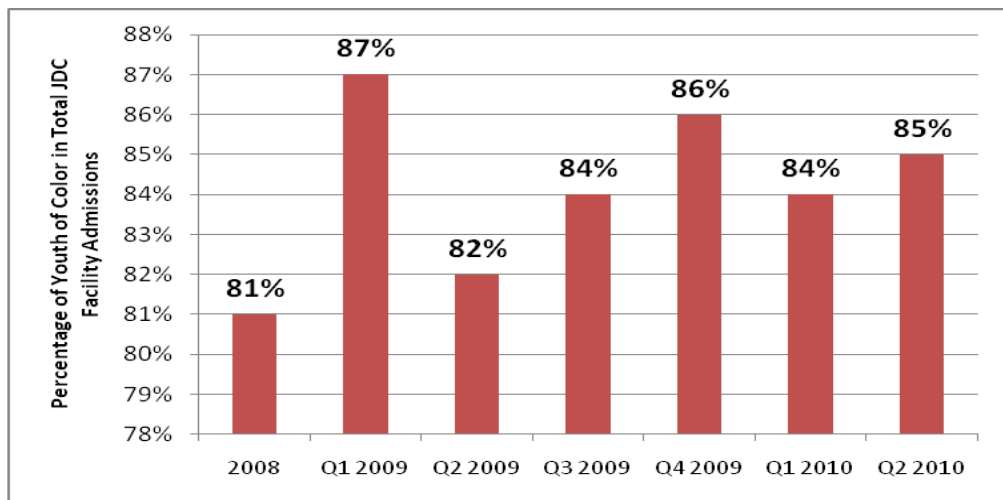
### Youth of Color Percentage of JDC Facility Admissions

Q2 2009 – Q2 2009: Increase of 4%

Youth of Color Percentage of Overall JDC Facility Admissions.

Formula:  

$$\frac{\text{Youth of Color Admissions to JDC Facility}}{\text{Total Admissions to JDC Facility}}$$



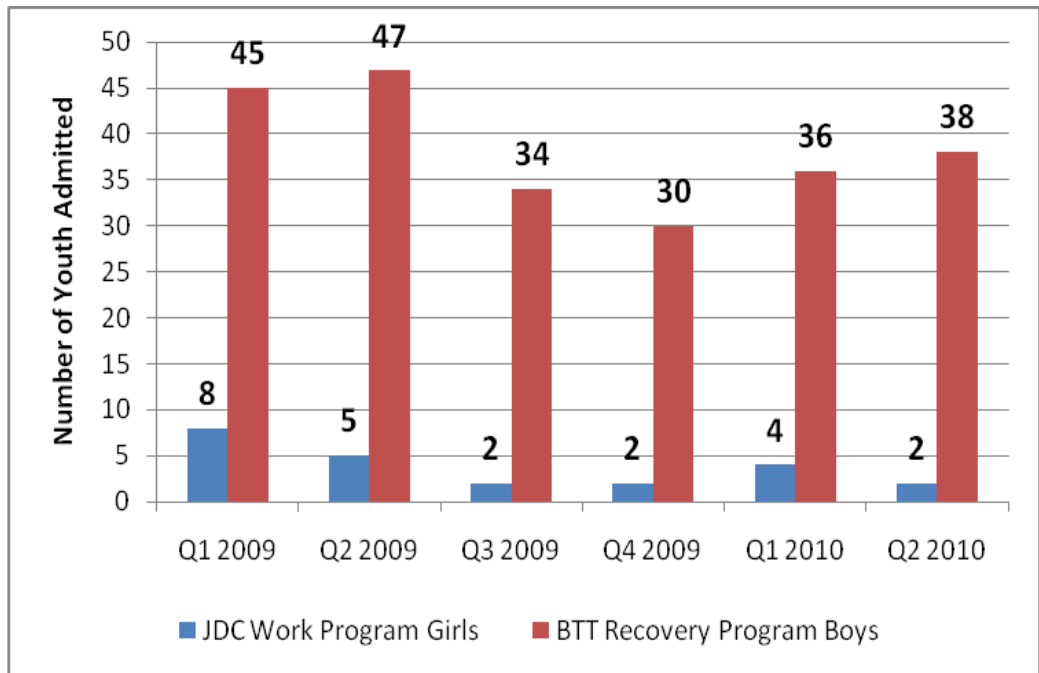
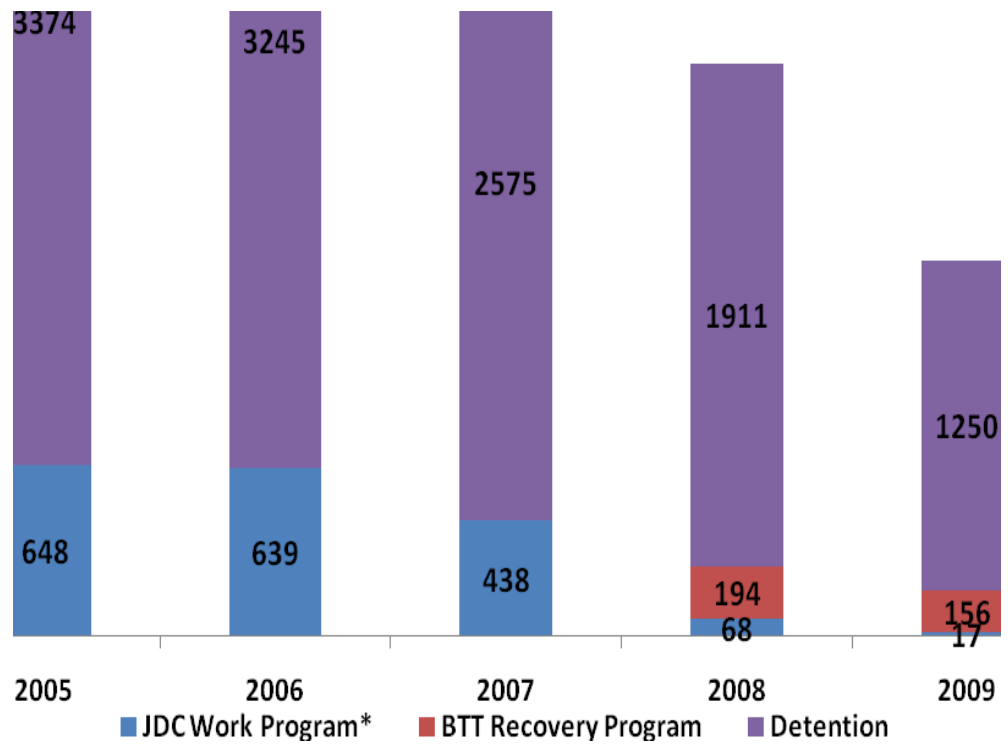
### Admissions to JDC Facility by Program and by Race and Latino Ethnicity, Q2 2010

Admissions to JDC Facility by Program and by Race and Latino Ethnicity with any Race.

Race	QUEST	Work Program	Det.	Total Facility	% of Total
Black				156	60.0%
White				40	15.4%
Latino Ethn. w/any race				22	8.5%
Asian				18	6.9%
Native Am.				12	4.6%
Other				12	4.6%
<b>Number of Admissions</b>	<b>4</b>	<b>2</b>	<b>254</b>	<b>260</b>	<b>100.0%</b>

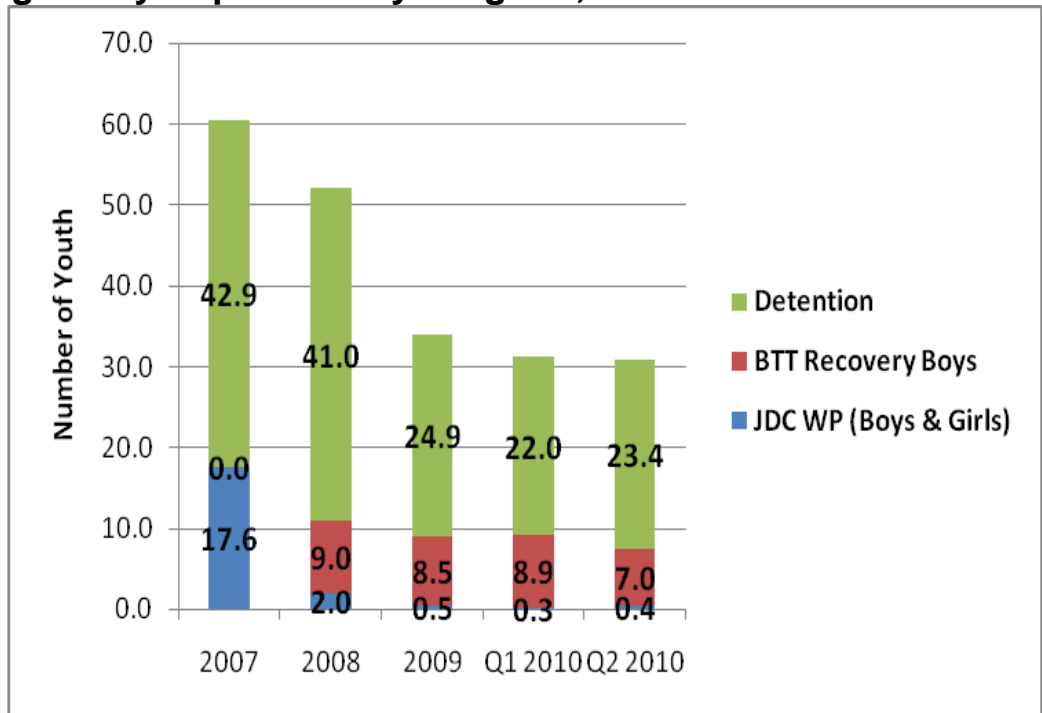
### Program Admissions, 2005 - 2009

\*In March 2008, the Boys Work Program was moved from JDC to BTT and was renamed the Recovery Program.



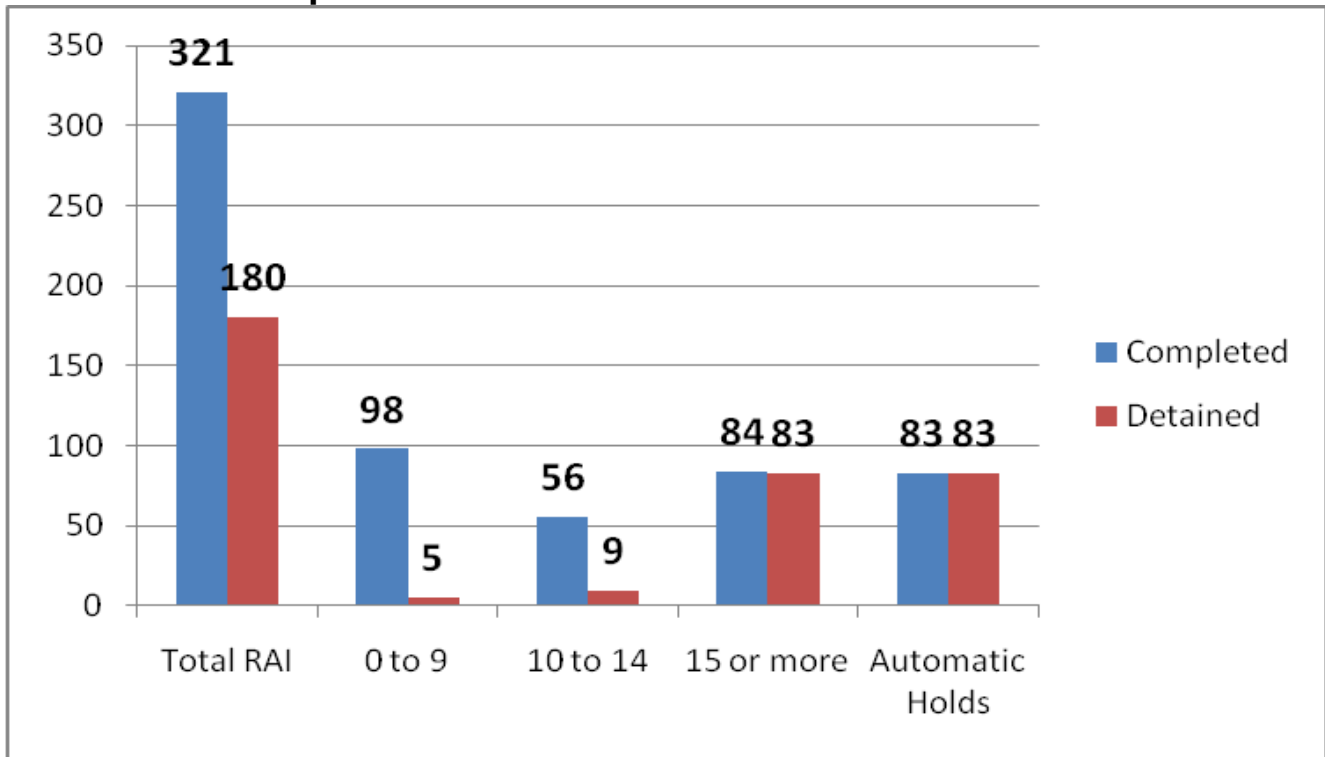
**Average Daily Population by Program, 2007 – Q2 2010**

\*In March 2008, the Boys Work Program was moved from JDC to BTT and was renamed the Recovery Program.

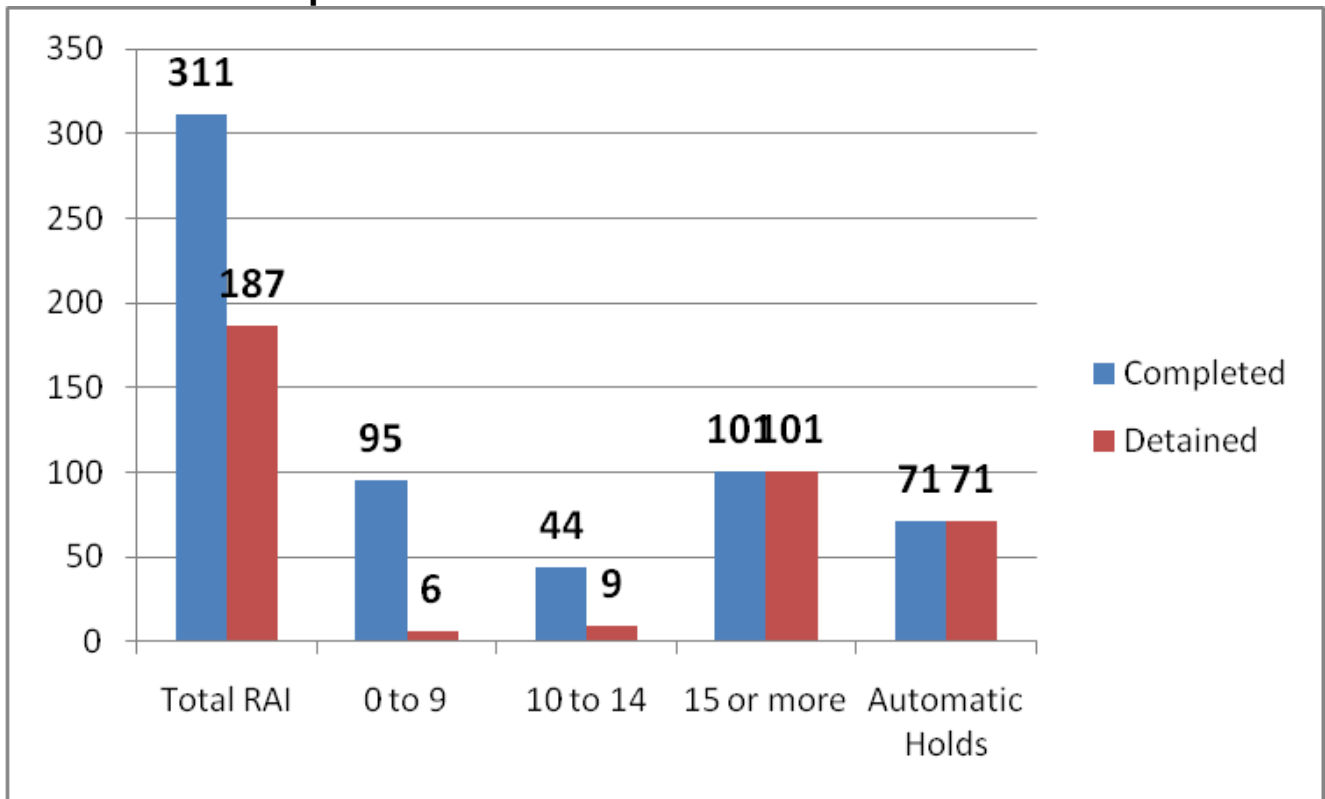




**RAI Impact: Quarter 1 2010 Override Rate: 9%**



**RAI Impact: Quarter 2 2010 Override Rate: 11%**



## Ramsey County Census and Saint Paul Public School Demographics

### Ramsey County Juveniles – 2008, Ages 10-17 by Race\*

Race/Ethnicity	Number	% of Total
White	31,763	60%
Asian	8,923	17%
Black	4,489	9%
Latino Ethnicity w/any race	4,178	8%
Two or more races	3,423	6%
Native American	**	**
<b>Total</b>	<b>52,776</b>	<b>100%</b>

\*\* Census note: Data for Native American youth ages 10 to 17 in Ramsey County cannot be reported because the number of sample cases is too small.

### St. Paul Public Schools Students – 2008\*, Grades 5-12 by Race

Race	Number	% of Total
Black	8,356	30%
White	6,465	23%
Latino Ethnicity	3,437	13%
Asian	9,082	33%
Native American	425	2%
<b>Total</b>	<b>27,765</b>	<b>100%</b>

\*SPPS note: Unaudited Count – Final numbers may vary. Due to rounding, percentages do not equal 100%.

#### Report Notes:

Radius Program numbers are included in the Detention numbers throughout this report. Radius is a program for girls. The program had 12 admits in 2007; 27 admit in 2008; and 15 admits in 2009.

The Boys Work Program was moved from the Juvenile Detention Center (JDC) to Boys Totem Town (BTT) in early March 2008 and was renamed The Recovery Program. Girls are remaining at JDC.